



# WESTGATE OF SALINE

## LUXURY FEATURES

- Spacious 3 bedroom/2.5 bath townhomes
  - Some with unfinished basements
- 2 bedroom/2 bath ranch-style apartments
  - All with slab foundations
- Attached 1.5 or 2 car direct entry garages
  - Aspen – 1.5 car with remote opener and outdoor keypad
  - Boulder – 2 car with remote openers
  - Cedar – 1.5 car with additional storage, remote opener and outdoor keypad
- Covered front private porch & entry
- Spacious back patio with light and electrical outlet – Aspen
- Well planned kitchen with designer cabinetry
  - Fully equipped with stainless steel appliances including a gas range, refrigerator/freezer, dishwasher and built in microwave, garbage disposal and large single compartment stainless steel sink
  - Ceramic tile backsplash
  - Gourmet oversized island with overhang – Aspen
  - Pantry
- Flooring
  - Wood design plank flooring in living room, kitchen, dining room, additional bathrooms, foyer and hallway
  - Plush wall-to-wall carpeting in bedrooms and closets
  - Oversized ceramic tile flooring in master bathroom
- Bathrooms
  - Oversized ceramic tiled shower with Euro style glass shower door in master bathroom
- Washer and dryer
  - Full-size, side by side washer & dryer in laundry room
- Granite countertops in kitchen and bathrooms
- Grand primary bedroom with walk in closets
- Stepped up 9-foot ceiling in living room – Aspen & Boulder
- Wood shelving in all closets
- Black lever hardware
- Designer 3 ½” base moldings and wood corner blocks
- Superior sound control system
- Designer window coverings
- Energy efficient heating system and windows
- Central air conditioning
- Cable-ready in living room and bedrooms

## THE COMMUNITY

- Scenic community with sidewalks
- Brick enhanced exteriors
- Concrete walkways to front entrance of each front door
- Beautifully landscaped grounds with open space
- Located close to shopping, restaurants, schools and recreation centers
- Small dogs welcome. Sorry, no cats.  
(25-pound maximum, breed restrictions apply)

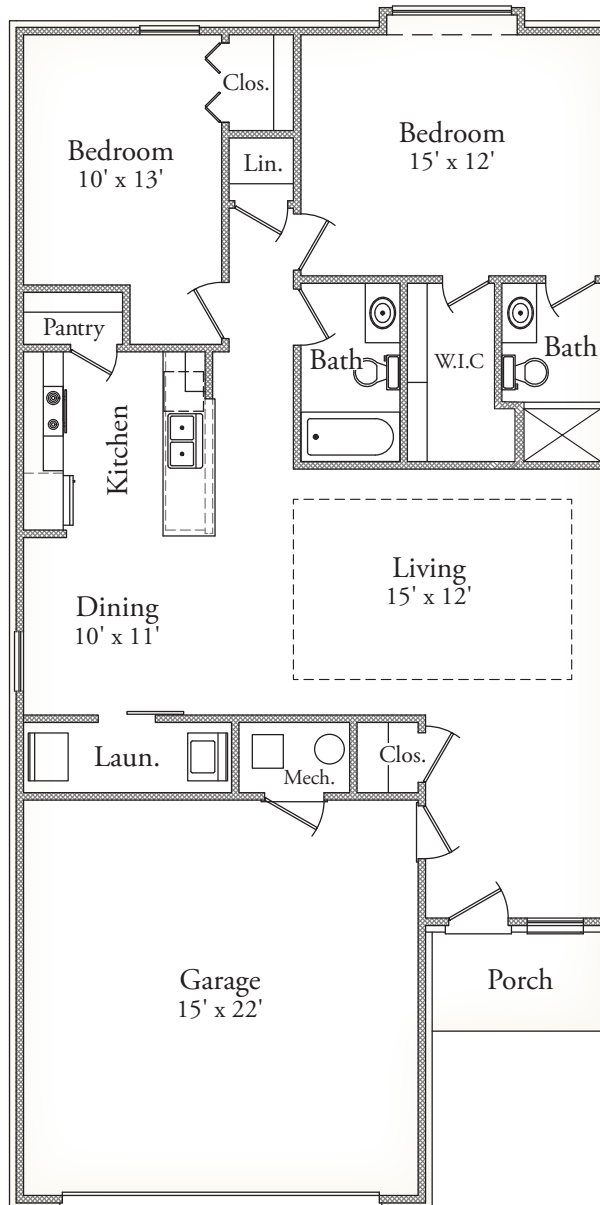




# WESTGATE OF SALINE

## BOULDER

2 Bedroom / 2 Bath Ranch  
1,258 Sq. Ft.  
(Bldgs 1-5)



Dimensions are approximate. Builder reserves the right to change or modify floor plans.



814 Claudine Court | Saline, MI 48176 | PH 734-664-0205 | EMAIL [westgateofsaline@gmail.com](mailto:westgateofsaline@gmail.com) | [www.mineighbor.com](http://www.mineighbor.com)